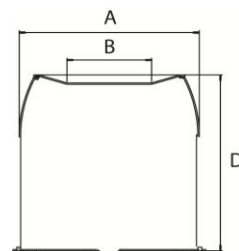
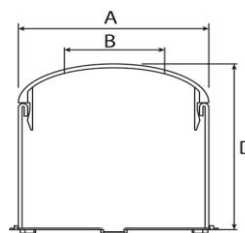
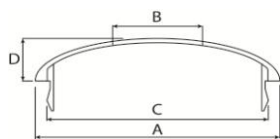


CAPS - STEEL WHEELS



| CSA RANGER STEEL CAPS - CENTRE BORE FITMENT | PART NO | CAP DIAM | LOGO DIAM | WHEEL CLIP IN DIAM | CAP HEIGHT | SCREW SIZE |
|--|----------|----------|-----------|--------------------|------------|------------|
| | | A | B | C | D | |
| STEEL CHROME DOME -ONE PIECE SUIT FORD/HQ | 401-145 | 80 | 44 | N/A | 65 | N/A |
| STEEL WHITE DOME - ONE PIECE SUIT FORD/HQ | 401-145W | 80 | 44 | N/A | 65 | N/A |
| STEEL CHROME DOME 4X4 2 PIECE SHORT SUIT 139.7MM PCD 110MM CB | 401-160 | 109 | 44 | N/A | 104 | N/A |
| STEEL CHROME DOME 4X4 2 PIECE - LONG SUIT 139.7MM PCD 110MM CB | 401-164 | 109 | 44 | N/A | 146 | N/A |
| STEEL CHROME DOME 4X4 1 PIECE - SUIT 5/150MM PCD 113MM CB | 401-158 | 112 | 60 | N/A | 95 | N/A |
| DOMED END CAP ONLY CHROME CSA LOGO 44MM SUIT 160 AND 164 CAPS | 401-169 | 107 | 44 | 99 | 14 | N/A |